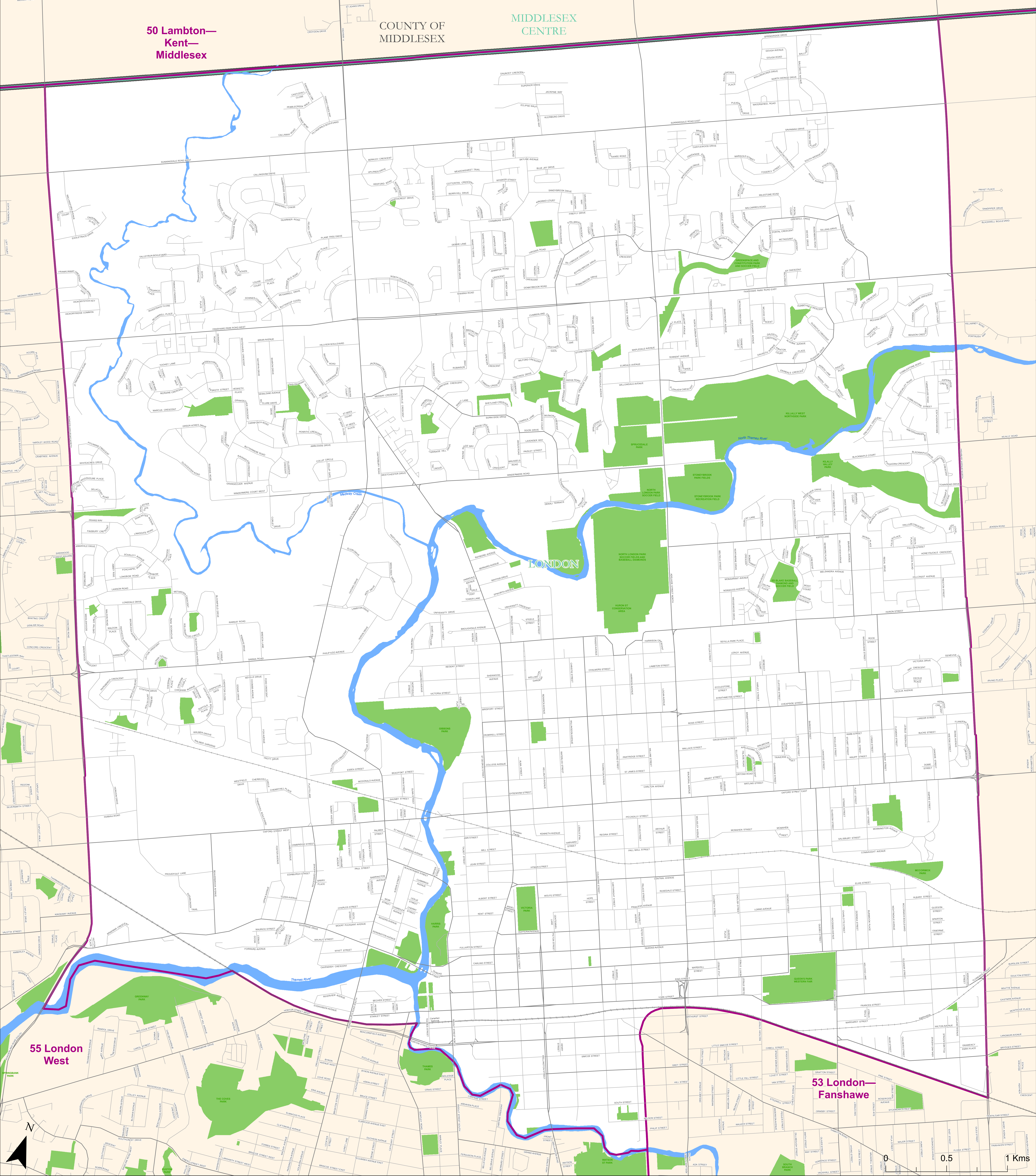


50 Lambton—  
Kent—  
Middlesex

COUNTY OF  
MIDDLESEX

MIDDLESEX  
CENTRE



### 054 - London North Centre

- Electoral District
- Divided Highway
- Major Road
- Lower Tier\*\*
- First Nations Community
- Provincial Park
- Railway
- Provincial Highway
- Local Road
- Upper Tier\*
- Park/Conservation Area
- Lakes & Rivers

**Elections Ontario**  
We Make Voting Easy.  
www.elections.on.ca



\* Includes Regions, Counties and Districts. \*\* Includes Cities, Towns, Townships and Villages. © Queen's Printer for Ontario, Aug 29, 2018. Prepared by the PREO Division of Elections Ontario for the purpose of presenting election information only. This is not a plan of survey. Not to be reproduced without express written consent of the Chief Election Officer of Ontario. Contains information licensed under the Open Government Licence - Canada.